

Name _____

(Draw a 3-inch line segment for your name.)

Date _____

Day of the Week _____

Tally marks

- Write the number one hundred sixteen on the place value chart.

| Hundreds | Tens | Ones |
|----------|------|------|
| | | |

Circle the digit that tells the number of 100's.

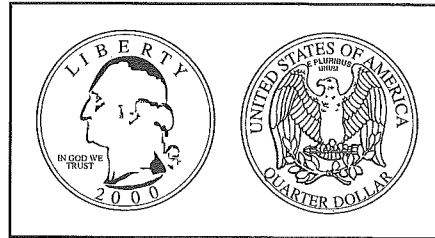
- On Mrs. Barlow's lunch graph, eight children put their tags in the lunch-from-home row. Six children put their tags in the school-lunch row. Draw the tags on the lunch graph.

| | | | | | | | | | |
|-----------------|--|--|--|--|--|--|--|--|--|
| Lunch From Home | | | | | | | | | |
| School Lunch | | | | | | | | | |

How many more children eat lunch from home than eat school lunch? _____ children

How many tags are on the graph? _____ tags

- How much money is this? _____



- Color the thermometer to show 30°F.

- Maureen wrote a two-digit number on a piece of paper.

She gave the children the following clues to help them guess her secret number.

Maureen said, "The digits I used are 4 and 6."

Write the two possible numbers. _____

Maureen said, "The number is between 48 and 70."

Circle Maureen's secret number.

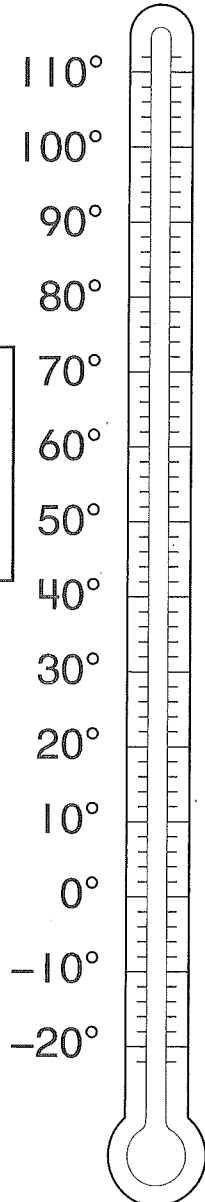
- Find the answers.

$38 - 10 = \underline{\hspace{2cm}}$

$8 + 1 + 9 = \underline{\hspace{2cm}}$

$$\begin{array}{r} 62\text{¢} \\ - 51\text{¢} \\ \hline \end{array}$$

$$\begin{array}{r} 58\text{¢} \\ - 52\text{¢} \\ \hline \end{array}$$



Name _____

1. Circle all the numbers that are between 50 and 75.

78 43 61 58 82 71

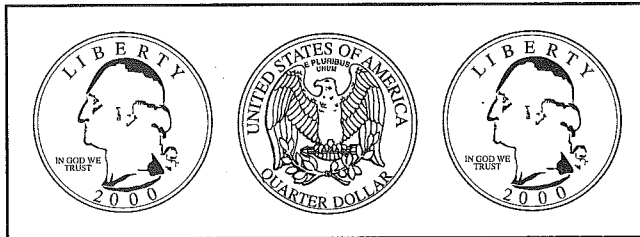
2. On Mrs. York's lunch graph, nine children put their tags in the lunch-from-home row. Six children put their tags in the school-lunch row. Draw the tags on the lunch graph.

| | | | | | | | | | |
|-----------------|--|--|--|--|--|--|--|--|--|
| Lunch From Home | | | | | | | | | |
| School Lunch | | | | | | | | | |

How many more children eat lunch from home than eat school lunch? _____ children

How many tags are on the graph? _____ tags

3. How much money is this? _____



4. Color the thermometer to show 50°F.
5. Sharon wrote a two-digit number on a piece of paper. She gave the children the following clues to help them guess her secret number. Sharon said, "The digits I used are 7 and 9."

Write the two possible numbers. _____

Sharon said, "The number is between 75 and 95."
Circle Sharon's secret number.

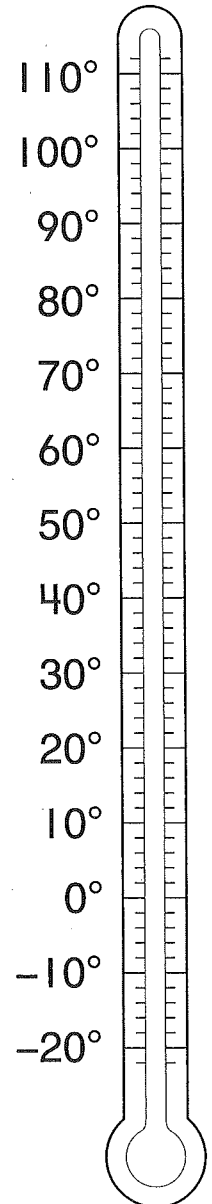
6. Find the answers.

$28 - 10 = \underline{\hspace{2cm}}$

$8 + 2 + 6 = \underline{\hspace{2cm}}$

$$\begin{array}{r} 29\text{¢} \\ - 17\text{¢} \\ \hline \end{array}$$

$$\begin{array}{r} 35\text{¢} \\ - 15\text{¢} \\ \hline \end{array}$$



This page may not be reproduced without permission of Harcourt Achieve Inc.