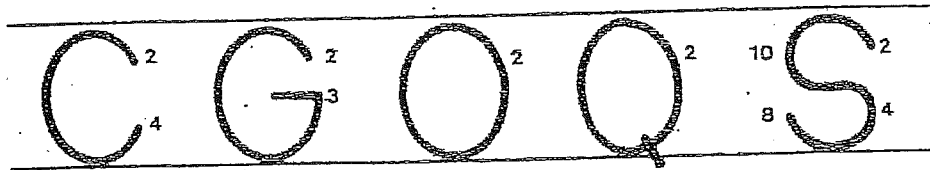
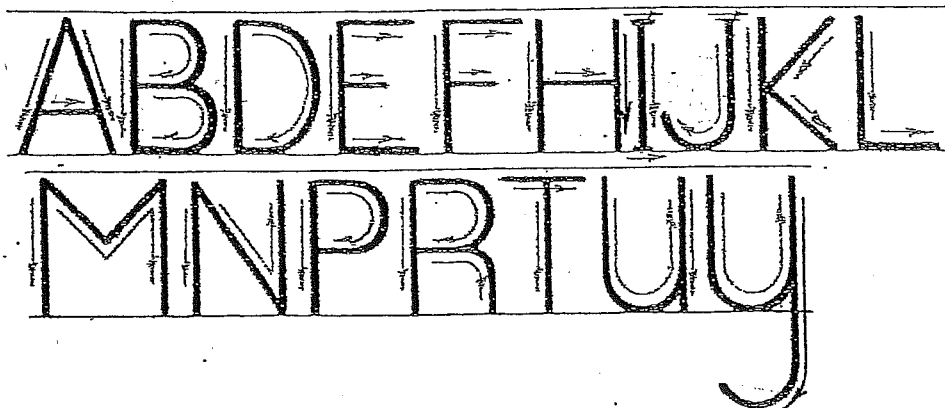


## Instructions for the Formation of Capital Letters

- All capital letters are tall.
- Capital letters almost fill up the space between the baseline and the top line. Remember that tall letters do not touch the top line.
- The rules for round lowercase letters also apply to the following capital letters: C, G, O, Q, S. They each start at 2 on the clock and go up. The crossbar on the Q starts inside the bottom of the circle and slants in the direction in which we write, ending just below the baseline.



- In writing capital letters beginning with lines, make the vertical line first, starting at the top. The horizontal lines of A, E, F, H, I, J, and T are made in the direction in which we write. Where there is more than one horizontal line, make the top line first (E, F, I). Lift the pencil before making the second lines of A, B, D, E, F, H, I, J, K, M, N, P, R, and T. Y is the only capital letter that is finished below the baseline.



- The capital letters V, W, X, and Z are made just like their lowercase letters.

